



ANIMAL CARCASSES AND ORGANIC WASTE INCINERATOR **MOD. EXCE AN**

T E C H N O L O G Y - D E S I G N - E N V I R O N M E N T

 +39 0823.88.11.05

 www.fortec-inceneritori.it

 Francolise (CE) - ITALY

 info@fortec-inceneritori.it





TECHNOLOGY

Thanks to the FORTEC VOYAll microprocessor management system, the cycle is completely controlled and automated

DESIGN

The upper full-section door allows a comfortable load of every type of waste.

ENVIRONMENT

Emission abatement systems based on Best Available Technology

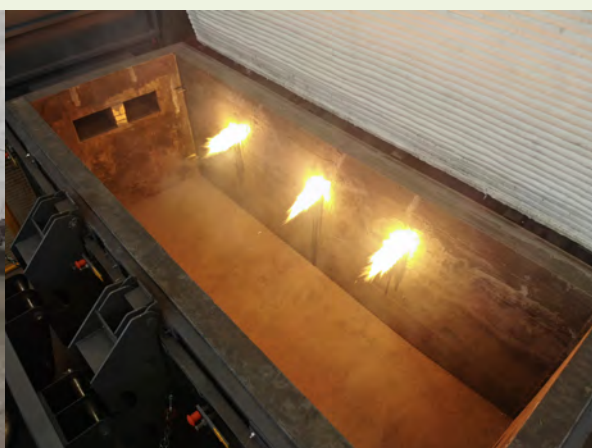
Our oven mod. **EXCE AN** is synonymous with **ease of use, high performance and robustness**. Today it's the most versatile oven of our production and boasts numerous **installations all over the world**.

Thanks to the top quality materials of our systems mod. EXCE AN we can guarantee a **great reliability and durability**.

The **insulation** of the chambers is made by **calcium silicate** panels having a high insulating coefficient with subsequent cast of refractory concrete having a **high concentration of Al₂O₃**, which is resistant to temperatures of temperatures of **over 1500°C**. For the loading door lining, our technical choice was oriented towards the use of **HT ceramic fiber**, with a density higher than 160 kg / m³, fixed by stainless steel hooks, for its strong insulating power, its low specific weight and its great resistance to thermal shocks.

Chamber volumes, ranging from **0.4 mc** of EXCE AN 4 to **10 mc** of EXCE AN 10, are suitable for any type of application, whether it is the disposal of animal carcasses from small breedings and farms, to the processing of more than one ton of waste from the meat industry.

Thanks to the **top loading system**, it is possible to easily insert the material to be treated into the incineration chamber, even in the presence of **large whole carcasses**. It's possible to equip the oven with automated loading systems on request.



ZERO IMPACT

PLANT SOLUTIONS

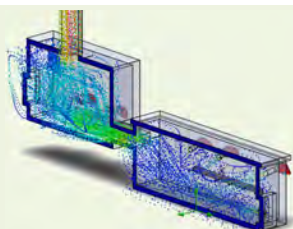
TECHNOLOGY AT THE SERVICE OF THE ENVIRONMENT



LOW EMISSIONS Process

Abatement of VOCs through Post-Combustion chamber

Treatment of pollutants and dust using Scrubber



The combustion process is designed to ensure that the **emissions comply** with the most stringent **international emission standards**.

The effluent gases from the incineration chamber, by means of a calibrated duct, come to flow into the **post-combustion chamber** and here they are treated at a temperature of **over 860 ° C** in order to make a complete oxidation.

The conformation of the chambers, studied through the use of latest generation **thermofluidodynamic simulation software**, ensures **perfect heat distribution** and full compliance with the post-combustion operating parameters imposed by the **EC Regulation 1069/2009** and **EU 142/2011 Regulation**, namely:

- Time **contact gas**: > 2"
- Working **temperature**: > 850 ° C
- Free **oxygen level**: > 6%



HUNDREDS OF CUSTOMERS IN THE WORLD HAVE CHOSEN OUR OVENS



Model	U.M.	EXCE 4	EXCE 8	EXCE 12	EXCE 25	EXCE 35	EXCE 50	EXCE 100
Incineration chamber volume	m^3	0,4	0,8	1,2	2,5	3,5	5,0	10,0
Max burner capacity	Kg/h	40	80	120	200	300	350	500
Loading capacity	$Kg/ciclo$	120	240	360	750	1050	1500	3000

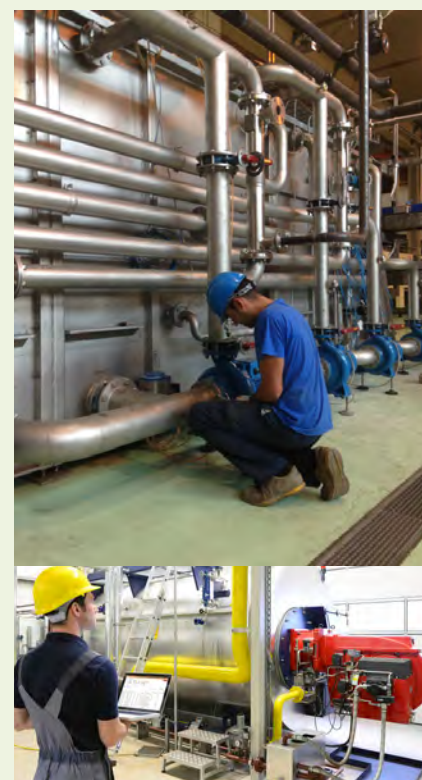
CUSTOMIZED SERVICES

- Feasibility studies
- Functional Layouts
- Thermo fluid dynamics CFD simulations
- Assistance with authorization procedures
- Scheduled maintenance
- Remote assistance

QUALITY

Certified Company Management System **ISO 9001: 2015**

Certified Environmental Management System **ISO 14001:2015**



For.Tec. Forniture Tecnologiche Srl - Via Appia km 186.900 81050 Francolise (CE)
 Tel +39 0823.88.11.05 Mail: info@fortec-inceneritori.it Web: www.fortec-inceneritori.it

Please note that performances, features and aesthetic forms are purely indicative and not binding for For.Tec.