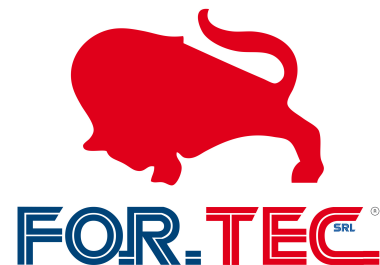



ENG



HOSPITAL AND INDUSTRIAL WASTE INCINERATORS **MOD. EXCE OS**

TECHNOLOGY - DESIGN - ENVIRONMENT

 +39 0823.88.11.05

 www.fortec-inceneritori.it

 Francolise (CE) - ITALY

 info@fortec-inceneritori.it



TECHNOLOGY

Thanks to the FORTEC VOYAll microprocessor management system, the cycle is completely controlled and automated

DESIGN

The upper full-section door allows a comfortable load of every type of waste.

AMBIENTE

Emission abatement systems based on Best Available Technology



Our oven mod. **EXCE OS** is designed to dispose hospital and industrial waste with a medium-high lower calorific value (L.C.V.) in the fastest, easiest and safest way.

Thanks to the **top quality materials** of our systems mod. EXCE OS, we can guarantee a great reliability and durability.

The **insulation of the chambers** is made by **calcium silicate** panels having a high insulating coefficient with subsequent **cast of refractory concrete** having a **high concentration of Al₂O₃**, which is resistant to temperatures of **over 1600°C**. For the loading door lining, our technical choice was oriented towards the use of **HT-Z ceramic fiber**, fixed by **stainless steel hooks**, for its strong insulating power, its low specific weight and its great resistance to thermal shocks.

Chamber volumes, ranging **from 0.4 mc of EXCE OS 4 to 10 mc of EXCE OS 10**, are suitable for any type of application, from the disposal of hospital / urban waste from small clinics, resorts or communities, to the disposal of waste from large collection centers.

Thanks to the **top loading system** it is possible to **easily insert the material to be treated** into the incineration chamber.

On request, it is possible to equip the oven **with automated loading systems, heat recovery systems and special flue depuration systems**. Furthermore, it is possible to install the ovens on trailers or inside containers, in order to make them movable.



EASY AND ECO-FRIENDLY PLANT SOLUTIONS

TECHNOLOGY AT THE SERVICE OF THE ENVIRONMENT



LOW EMISSIONS Process

Abatement of VOCs through Post-Combustion chamber according to Directive 2000/76 / EC - Operating Parameters

Possibility of installing customized emission abatement systems according to every need

In the incineration chamber **the waste burns at high temperatures** (over 1000 ° C) in order to eliminate all traces of pollutants; at the end of the incineration cycle, **the result of the process will be inert ash.**

The **effluent gases** from the incineration chamber, by means of a calibrated duct, **flow into the post-combustion chamber** and are **treated here at a temperature of over 1100 ° C** to operate their complete oxidation and avoid the formation of dioxins.

The conformation of the chambers, studied through the use of latest generation **thermofluidodynamic simulation software**, ensures perfect heat distribution and full compliance with the post-combustion operating parameters imposed by the **Directive 2000/76/EC**

- Time contact gas: > 2"
- Working temperature: 860/1100 °C
- Free oxygen level: > 6%



HUNDREDS OF CUSTOMERS IN THE WORLD HAVE CHOSEN OUR OVENS



Model EXCE	U.M.	OS 4	OS 8	OS 12	OS 25	OS 35	OS 50	OS 100
Incineration Chamber Volume	m^3	0,4	0,8	1,2	2,5	3,5	5,0	10,0
Max Burner Capacity	Kg/h	30	50	100	150	250	350	500
Max Load Capacity	$Kg/cycle$	60	120	180	375	525	750	1500

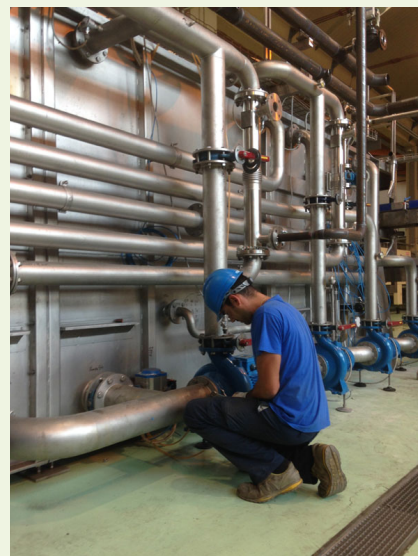
CUSTOMIZED SERVICES

- Feasibility studies
- Functional Layouts
- Thermo fluid dynamics CFD simulations
- Remote assistance
- Assistance with authorization procedures
- Scheduled maintenance

QUALITY

Certified Company Management System ISO 9001: 2015

Certified Environmental Management System ISO 14001:2015



For.Tec. Forniture Tecnologiche Srl - Via Appia km 186.900 81050 Francolise (CE)
 Tel +39 0823.88.11.05 Mail: info@fortec-inceneritori.it Web: www.fortec-inceneritori.it